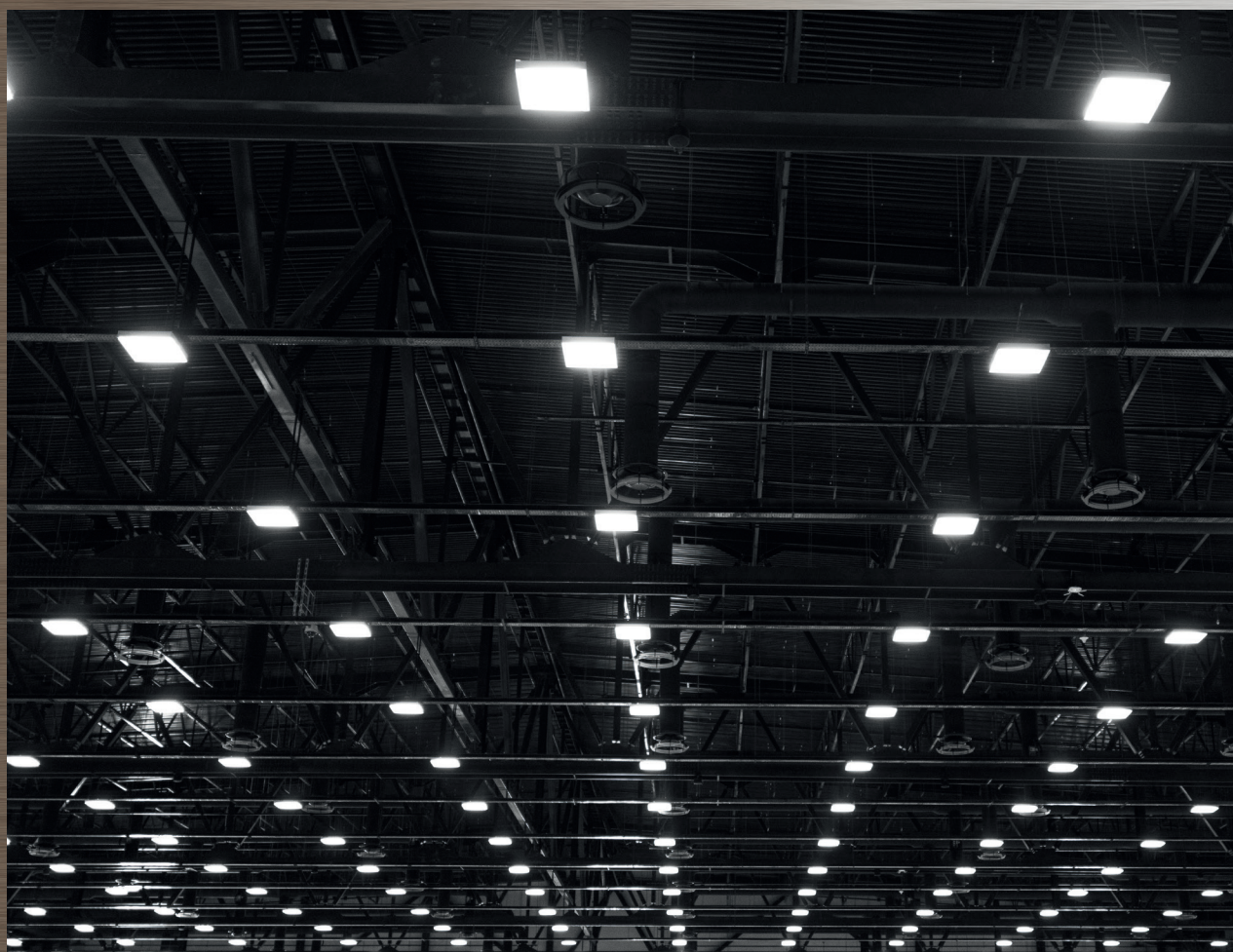




# INDUSTRIAL COMMERCIAL

## LED professional lighting





# Prim@lux

L I G H T S D I V I S I O N

PrimoLUX, the lighting division of PrimOtek, a dynamic and constantly growing company with thirty years of experience, able to offer an increasingly complete range of lighting and light control solutions. Continuous commitment to research and development and accurate control of the entire production process. From product design to its realization up to use in the most sophisticated creations. The mix of specialist skills, innovation and attention to detail are the goals of the company, which brings to elegant and functional design products, able to meet the most demanding technical and aesthetic needs of any project. All the products of the PrimoLux line by PrimOtek are made using the most modern technologies and with the highest quality components that guarantee reliability and efficiency over time.





ORK LED 4

.....



RIGEL LED 6

.....



SAT double LED 8

.....



SAT single LED 10

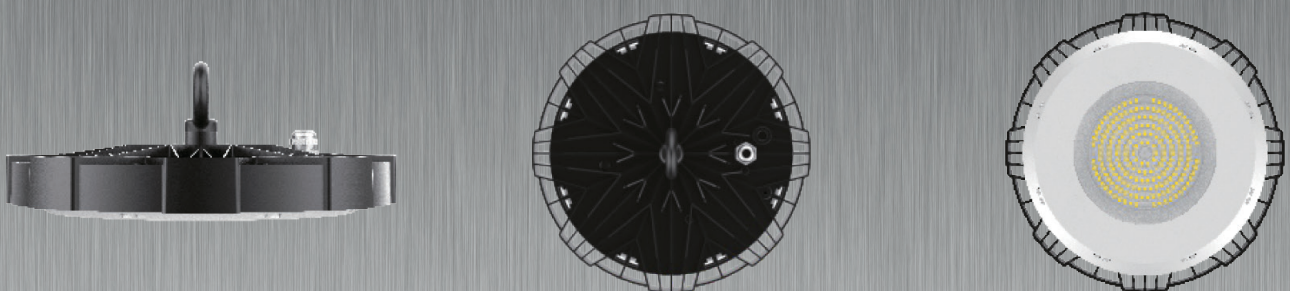


Commercial and industrial Light

# Ork LED



Modern, compact and elegant design.  
High luminous efficiency for optimal energy saving.



ORK LED, is a new modern high bay series with three power, 100W, 150W and 200W, with 160 lumens/watt efficiency. 200W with total lumens output can reach 26000-32000 lumens, is ideal replacement to the traditional HPS or metal halide high bay lights. The whole series fits the innovation design, put the driver components on the PCB, share the same PCB board with SMD LED. This solution brings benefits and convenience during installation and also offers to zero maintenance.

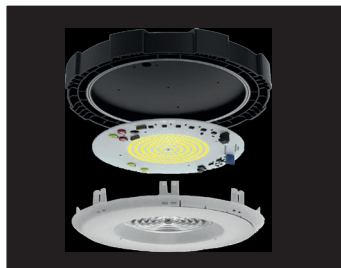
ORK LED series is available at 60°, 90°, 120° beam angle.



## Commercial and industrial Light

# Ork LED series

Built-in innovative flicker free driver design



Available with different beam angles: 60° / 90° / 120°



IP65 - IK09  
Thermal protection



220V 240V	UGR <20	IP65	IK 08		ECODESIGN COMPLIANT	CE	RoHS	Ta -20° +45°C
--------------	------------	------	----------	--	------------------------	----	------	------------------

## Ork 100 LED

Standard beam angle 90°

	cod.	WATT	C.C.T.	CRI	LUMEN OUTPUT	FUNCTION
	HB01H100M-840	100W	4000 K	>80	13228 lm	on-off

## Ork 150 LED

Standard beam angle 90°

	cod.	WATT	C.C.T.	CRI	LUMEN OUTPUT	FUNCTION
	HB01H150M-840	150W	4000 K	>80	19784 lm	on-off

## Ork 200 LED

Standard beam angle 90°

	cod.	WATT	C.C.T.	CRI	LUMEN OUTPUT	FUNCTION
	HB01H200M-840	200W	4000 K	>80	26379 lm	on-off

- Aluminum body.
- UV-stabilized anti-age powder coating.
- IP65
- IK08
- Interchangeable optical system.
- Built in driver
- THD <10% and PF >95
- Flicker free
- Item built in compliance with standards EN 60598-1 and EN 60598-2-1.

### SOURCE

- SMD LED with efficiency up to 160 lumen / Watt
- 4000K standard (available on request: 3000K, 5000K)
- Rated LED life:> 50000h L70.

### INSTALLATION

- Suspended installation.

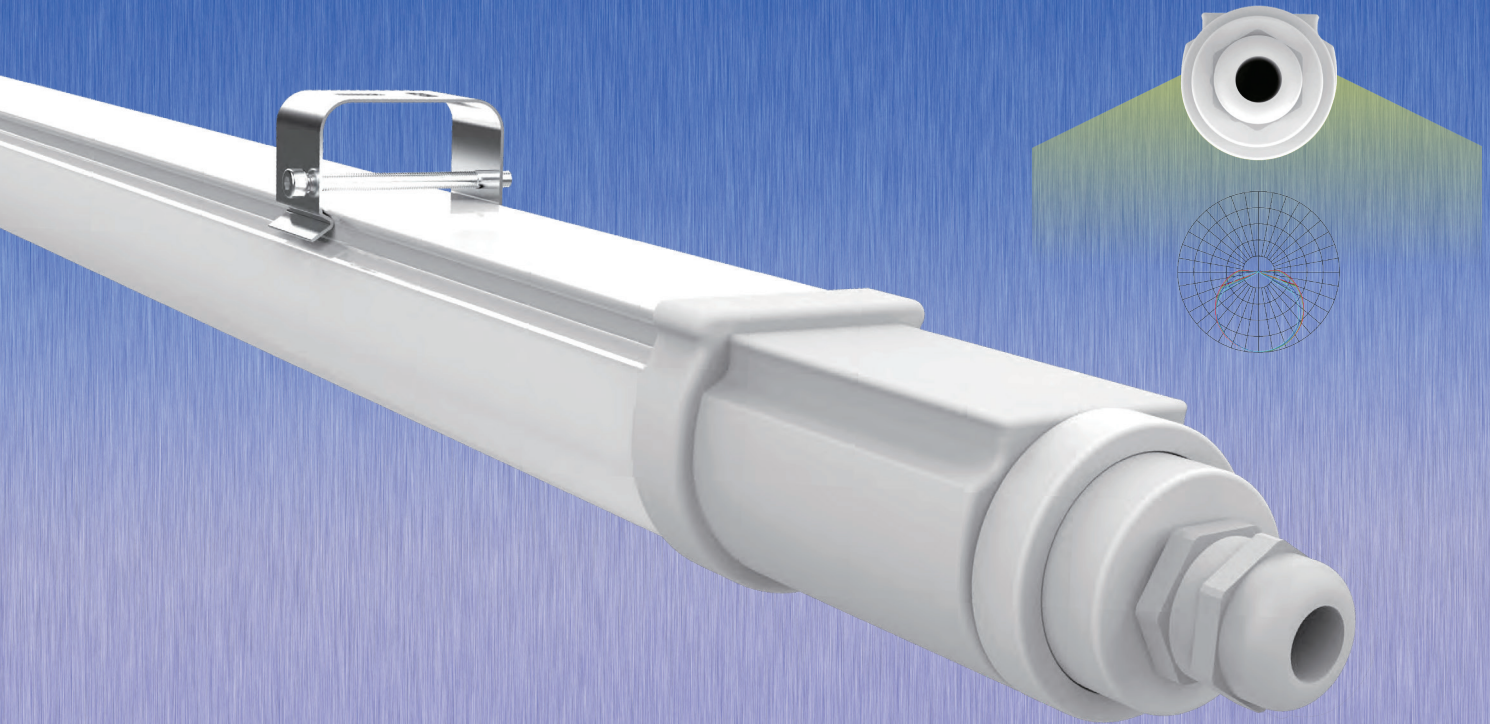
### DIMENSIONS

- 100W: Ø 250mm x H.51mm
- 150W: Ø 292mm x H.51mm
- 200W: Ø 335mm x H.51mm



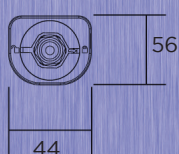
Commercial and industrial Light

# Rigel LED

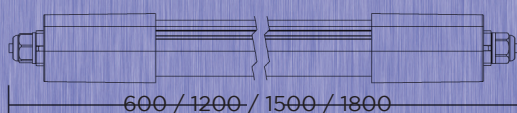


## RIGEL LED linear Tti-Proof series. High luminous efficiency for optimal energy saving.

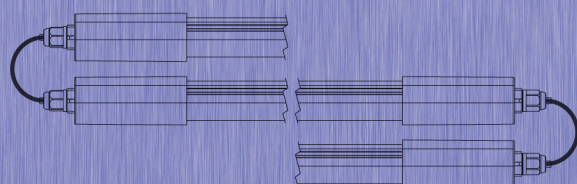
RIGEL series Waterproof linear ceiling / suspended LED compact version. It is available with radar sensor or bluetooth version and on-off. Energy efficiency & glare free. The milky light cover provide uniform light distribution, no dazzling light to eyes. Excellent and unique design design with IP65 waterproof, and its sealed design makes it better for areas with dust, dirt, humidity and harsh temperature. Quick installation, super easy to install, it can be mounted on ceiling or wall directly with the included mounting clips; or it can also be suspended to ceiling by hanging rope (Not Included). Strong construction, made by high quality polycarbonate housing and stainless clips, RIGEL LED is lusting & impact resistant, it's able to maintain its color and brightness over time.



Unit: mm

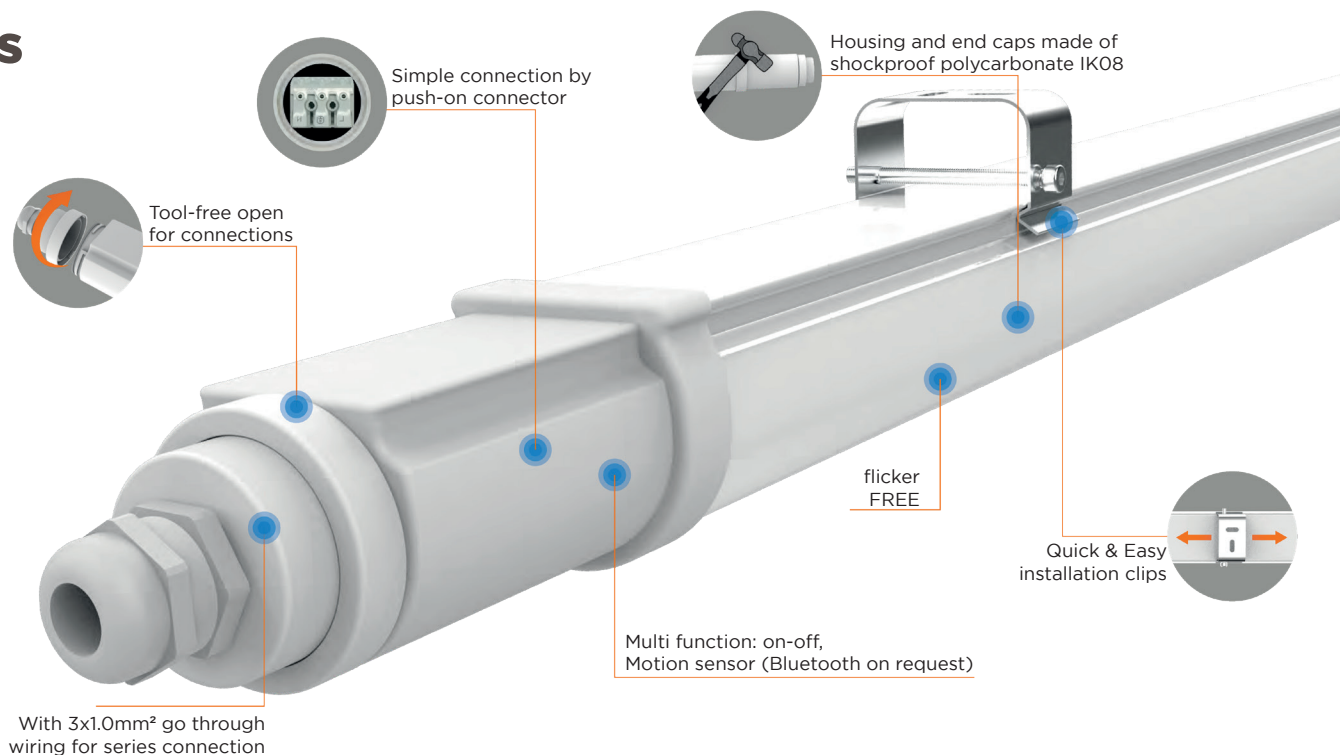


single or serial application (in&out connection)





# Rigel LED series



## Rigel LED 60cm

220V 240V	IP65	IK 08				RoHS	Ta -20° +45°C
--------------	------	-------	--	--	--	------	------------------

Single or in&out series connection mode (32 unit for line)

	cod.	WATT	C.C.T.	CRI	LUMEN OUTPUT	FUNCTION
	TP01H06020-840	20W	4000 K	>80	2560 lm	on-off
	TP01H06020S-840	20W	4000 K	>80	2560 lm	motion sensor

## Rigel LED 120cm

Single or in&out series connection mode (26 unit for line)

	cod.	WATT	C.C.T.	CRI	LUMEN OUTPUT	FUNCTION
	TP01H12035-840	35W	4000 K	>80	4515 lm	on-off
	TP01H12035S-840	35W	4000 K	>80	4515 lm	motion sensor

## Rigel LED 150cm

Single or in&out series connection mode (20 unit for line)

	cod.	WATT	C.C.T.	CRI	LUMEN OUTPUT	FUNCTION
	TP01H15050-840	50W	4000 K	>80	6450 lm	on-off
	TP01H15050S-840	50W	4000 K	>80	6450 lm	motion sensor

- High quality polycarbonate housing.
- UV-stabilized anti-age.
- IP65
- IK08
- Single or series connection mode.
- Built in driver
- THD <10% and PF >95
- Flicker free
- Item built in compliance with standards EN 60598-1 and EN 60598-2-1.

### SOURCE

- SMD LED with efficiency up to 145 lm/W
- 4000K standard (available on request: 3000K, 5000K)
- Rated LED life:> 50000h L70.

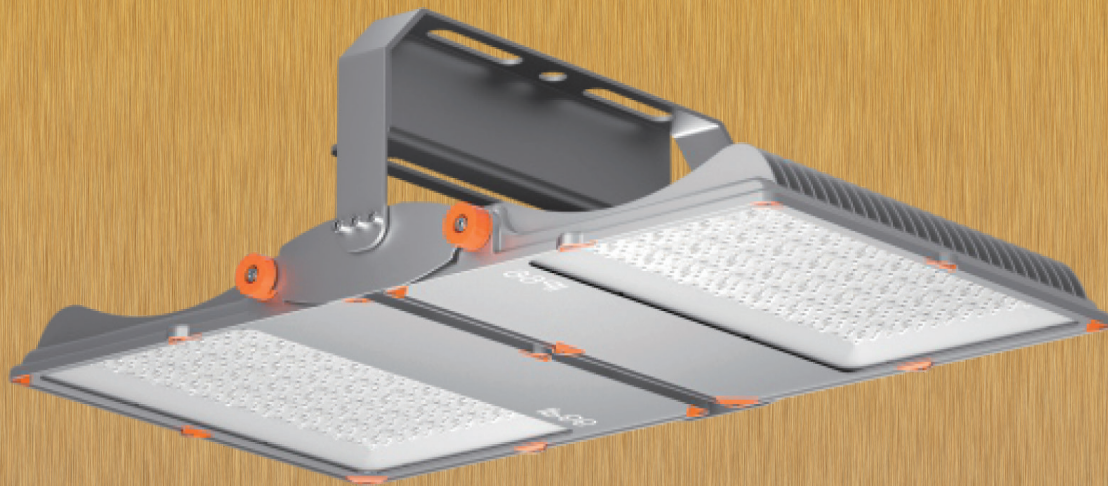
### INSTALLATION

- Ceiling / Suspended installation.
- Stainless steel mounting clips included
- With 3x1.0mm² go through wiring for series connection

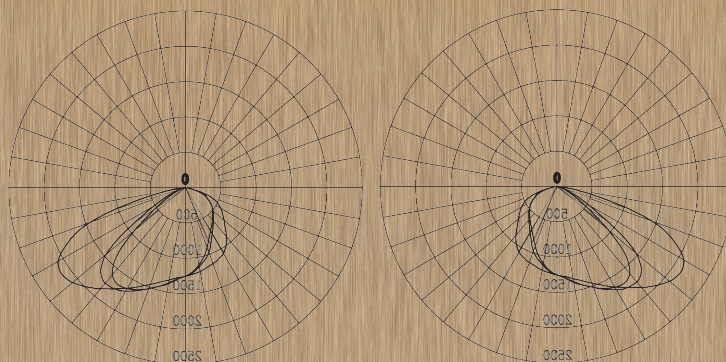


Commercial and industrial Light

# Sat LED double head



Double head projector with independent beams.

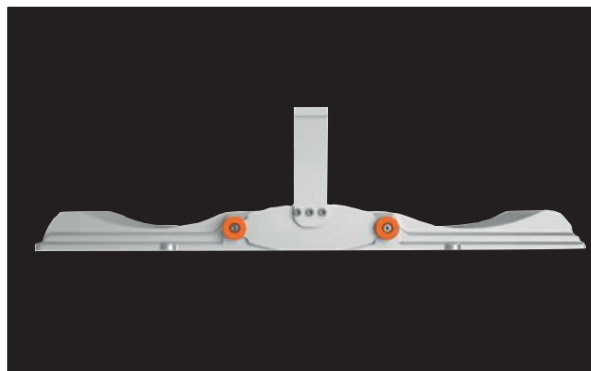


Double head projector with individually adjustable beams, ceiling, hanging and pole installation. Body in die-cast aluminium; 5mm tempered glass, transparent and colorless. Compartment adjustable optics. Monochromatic LED light source, optics with high efficiency lenses. Available in DALI version upon request. Standard symmetrical optics. On request it is available with different optics: 90°, 60°, 30° and Asymmetrical.



## Commercial and industrial Light

# Sat LED double

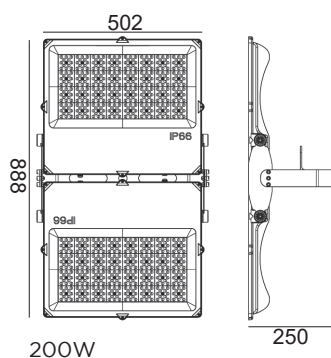


### SAT double 200W LED

220V 240V	IP66	IK 09		ECODESIGN COMPLIANT		RoHS	Ta -20° +45°C
--------------	------	----------	--	------------------------	--	------	------------------

Double asymmetrical beam

	cod.	WATT	C.C.T.	CRI	LUMEN OUTPUT	FUNCTION
	LF02H200A-840	200W	4000 K	>80	29430 LM	on-off
	LF02H200DA-840	200W	4000 K	>80	29430 LM	DALI



**cod. CON3P66-M**  
male connector optional  
IP68 3P

**cod. CON3P66-F**  
female connector optional  
IP68 3P

- Aluminum body.
- UV-stabilized anti-age powder coating.
- IP66
- IK09
- Interchangeable optical system.
- Interchangeable Driver
- THD <10% and PF >95
- Flicker free
- Item built in compliance with standards EN 60598-1 and EN 60598-2-1.

#### SOURCE

- SMD LED with efficiency up to 160 lumen / Watt
- 4000K standard (available on request: 3000K, 5000K)
- Rated LED life:> 50000h L70.

#### INSTALLATION

- Ceiling, wall and hanging installation.

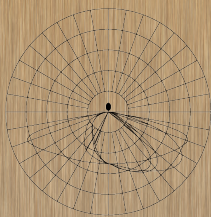


Commercial and industrial Light

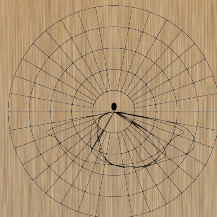
# Sat LED single head



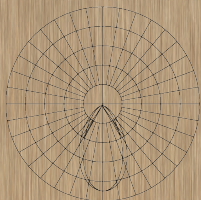
Professional projector for  
indoor and outdoor lighting



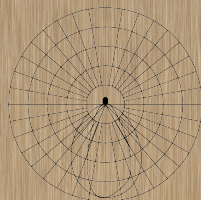
Asymmetrical T2M



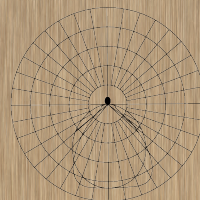
Asymmetrical T3M



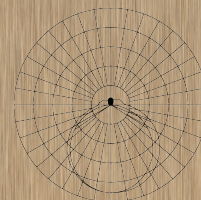
30°



60°



90°



120°

Light luminaire direct installation on the ground, wall, ceiling and pole. Body and optical compartment in die-cast aluminium; closing glass 5mm tempered, transparent and colorless. Adjustable beam direction optical compartment. Optics with optical hi efficiency lenses. LED light source, monochromatic beam. Upon request available in DALI version. Available with Symmetrical and Asymmetric optics. It is available upon request with different optics: Asymmetrical, 90°, 60°, 30°.



## Commercial and industrial Light

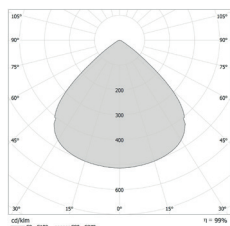
# Sat LED series



### SAT LED series

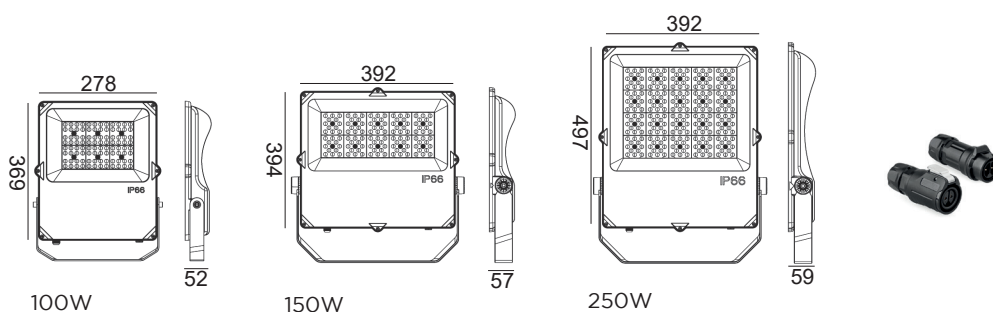
220V 240V	IP66	IK 09		ECODESIGN COMPLIANT		RoHS	Ta -20° +45°C
--------------	------	----------	--	------------------------	--	------	------------------

Symmetrical beam



#### SAT LED - Symmetric 120°

cod.	WATT	C.C.T.	CRI	lumen OUT	STANDARD OPTIC
LF00H100-840	100 W	4000 K	>80	12379 lm	120°
LF00H150-840	150 W	4000 K	>80	18568 lm	120°
LF00H250-840	250 W	4000 K	>80	30847 lm	120°



#### cod. CON3P66-M

male connector optional  
IP68 3P

#### cod. CON3P66-F

female connector optional  
IP68 3P

- Aluminum body.
- UV-stabilized anti-age powder coating.
- IP66
- IK09
- Interchangeable optical system.
- Interchangeable Driver
- THD <10% and PF >95
- Flicker free
- Item built in compliance with standards EN 60598-1 and EN 60598-2-1.

#### SOURCE

- SMD LED with efficiency up to 160 lumen / Watt
- 4000K standard (available on request: 3000K, 5000K)
- Rated LED life:> 50000h L70.

#### INSTALLATION

- Ceiling, wall and pole installation.





PrimOtek s.r.l.s.  
via Primo Maggio, 19  
25013 Carpenedolo (BS) Italy Ph +39 0302389856  
[www.primotek.it](http://www.primotek.it) - [info@primotek.it](mailto:info@primotek.it)