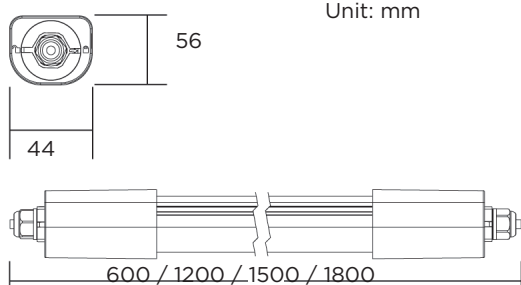
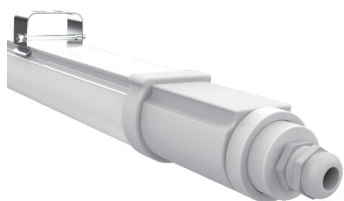


# RIGER LED 120cm

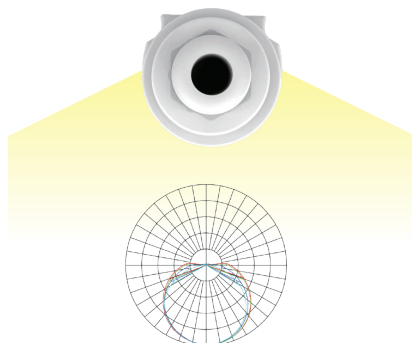
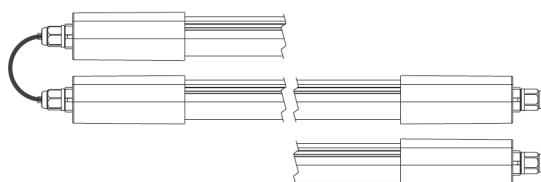
220V 240V	IP65	IK08			CE RoHS	Ta -20° +45°C
--------------	------	------	--	--	---------	------------------

item.: TP01H06035-840

Recessed On-Off LED, 220-240Vac, 4000K, CRI>80, 35W, Single connection mode or in&out in series (32 units per line)



single or series installation (predisposition in&out)



## Descrizione prodotto

RIGEL is a series of compact, waterproof LED ceiling lights, suitable for ceiling, wall, or suspended installation. Available with motion sensor, Blue-tooth version, and on-off switch. High luminous efficiency. The milky white diffuser provides uniform light distribution without glare. The excellent and unique design with IP65 protection makes RIGEL ideal for areas with dust, dirt, humidity, and harsh temperatures. Quick and easy installation, it can be mounted directly on the ceiling or wall using the included mounting clips, or it can also be suspended using the appropriate KIT (not included). Shock-resistant, made of high-quality polycarbonate and stainless steel clips, RIGEL LED not only offers high mechanical resistance but also maintains the color and brightness of the light over time.

## Fonte luminosa

SMD LED light efficiency 145 lumen/Watt  
Nominal flux: 5075 lm  
White color temperature: 4000K.  
Color rendering index: CRI>80.  
Lifetime: >50000h with L70.  
PF>95  
Number of light sources: 1.  
Output flux of the equipment: 4515 lm

## Dati elettrici

Driver power supply: input 220-240 Vac.  
Average system power consumption: 35W.  
Driver protections: Thermal, short circuit, overvoltage.  
Driver connection: whit Internal terminal block.  
Insulation class: II.  
Functions: On-Off.

## Descrizione Tecnica

Frame finish: White.  
Protection: IP65  
Mechanical resistance: IK08.  
Quality marks: CE, RoHS..  
Standards: CEI EN 60598-1; CEI EN 60598-2-03.

## Installazione

Ceiling, wall / suspension.  
INOX clips for installation included.  
Optional suspension KIT.  
Internal passing cable 3x1.0mm<sup>2</sup> for series installation.

## Standard applicati:

STANDARDS: CEI EN 60598-1, EN 62471, 2009/125/EC, 874/2012/EC, 2014/30/EU, 2014/35/EU, CEI EN 60598-2-2.  
Ecodesign Directive 2015/2019  
2014/30/EU, 2014/35/EU; Ecodesign ELR 2019/2015.