

# FAL- Profile 300LED-RGBALC

**FRESNEL LED 300W / RGBALC / DMX-RDM / IP23**

available with 14°, 19°, 26°, 36°, 50°, Zomm 15°-36°, Zomm 25°-50° optical system

## item SAG-20050-RGBALC (50° angle optional)

The FAL-Profile LED series is the result of the search for the best combination of professionalism, quality and competitive price; optimal light output and ease of use, combining, durability and ease of maintenance. FAL-Profile 300 LED is a series designed for professionals for the best performance, the available optics are:

14°, 19°, 26°, 36°, 50°, Zoom 15°-36°, Zomm 25°-50°.

Light source: RGBALC interchangeable professional LED module (red, green, blue, amber, lime, cyan). Adjustable color temperature 2700K-10000K CTT, CRI97 - TLCI>90.

Dimming: 16 bit 0-100%, 4 dimmer curves option, dimmer speed option.

Signal input: and output; XLR3 + XLR5.

Channel options: 10-CH, 11-CH, 8H-CH, 9H-CH, 18-CH selectable

Control via: DMX with RDM functions, Digital display for manual operation.

Cooling system options: silent fan, intelligent automatic temperature control system, 3 fan modes. Long-lasting performance: robust construction, high capacity electrical system components with high temperature insulation.

Safety: all appliances are CE marked according to the EN 60598-2-17 standard for professional lighting fixtures for public venues and theatres.

### Technical specifications:

Reversible yoke mounted on extruded slide rails for better balance of the accessories and for use in any position.

Aluminum and steel body for heat dissipation and high impact resistance, integrated safety net and filter frame locking system. Black lining.

Work positioning with respect to the horizontal axis 90°/-90°, by means of a rear handle and tightening by means of an ergonomic side knob.

XLR 5P + XLR 3P NEUTRIK for IN-OUT signal connections.

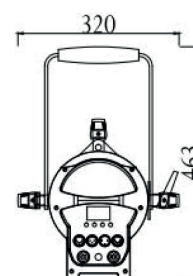
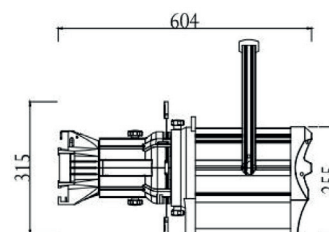
Powercon in-out for power connections.

Digital display with function control.

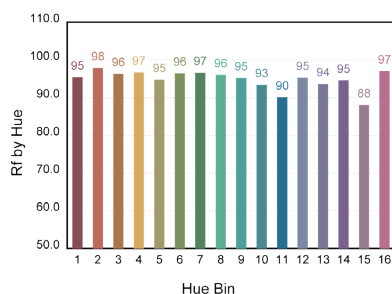
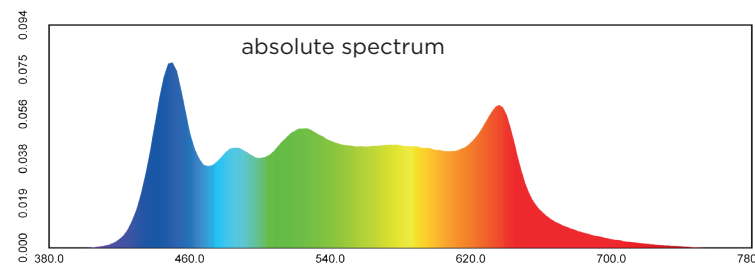
RGBALC interchangeable professional LED arrays.

CRI>97 and TLCI>90 at 3000K.

FAN MODE selectable.



Photometric data FAL-PROFILE SERIES			
Distance	2.5 mt.	5 mt.	7.5 mt.
19°	3942 lx	1540 lx	986 lx
26°	2094 lx	818 lx	524 lx
36°	1239 lx	484 lx	310 lx
50°	710 lx	277 lx	177 lx



Hue Bin	Hue Angle	CRI
1	0.0° - 22.5°	95
2	22.5° - 45.0°	98
3	45.0° - 67.5°	96
4	67.5° - 90.0°	97
5	90.0° - 112.5°	95
6	112.5° - 135.0°	96
7	135.0° - 157.5°	97
8	157.5° - 180.0°	96
9	180.0° - 202.5°	95
10	202.5° - 225.0°	93
11	225.0° - 247.5°	90
12	247.5° - 270.0°	95
13	270.0° - 292.5°	94
14	292.5° - 315.0°	95
15	315.0° - 337.5°	88
16	337.5° - 360.0°	97

### OPTICS SYSTEM:

- Glass lens set + objective.

### ELECTRICAL DATA:

- Standard 100-240V, 50/60Hz power supply (auto set).
- DMX: XLR 3-pole and XLR 5-pole In / Out panel connectors
- Power supply: powerCON In / Out panel connectors
- Power consumption: 300W full on
- Stand-by Power consumption: 6.5W
- Ta: -10...+40°C
- Tb: Max 60°
- Overvoltage and overtemperature circuits protection

### PHYSICAL

- IP23
- N. Weight: 10Kg
- Finishing: Black

### OPTIONAL ACCESSORIES:

- safety cable
- C-clamp