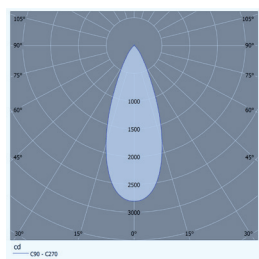
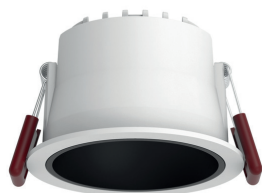


WD - 10 LED 10W-40°-IP65

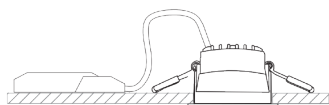
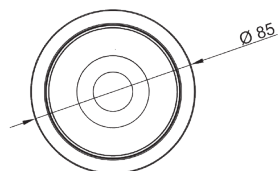
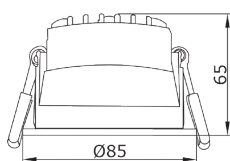
220V 240V	IP20 IP44	IK08		ECODESIGN COMPLIANT	CE	RoHS	Ta -20° +45°C
--------------	--------------	------	--	------------------------	----	------	------------------

Item.: RC0110B-930

Recessed On-Off downlight LED, 220-240Vac, 10W,
3000K, CRI92, Standard 60°- Black reflector



Foro per
incasso: Ø75 mm



Description

IP65 ceiling recessed
Die-cast aluminum body.
Powder coating anti-yellowing stabilized against UV rays.
Reflectors in metallized PC.
Upper LED frosted screen in PC.
Compliant: EN 60598-1 and EN 60598-2-2.

Light source

COB LED with nominal efficiency up to 135 lumens/Watt.
Nominal flux: 3375 lm.
White color temperature: 3000 K.
Color rendering index: CRI92.
Lifetime: >50000h with L70.
Number of light sources: 1.
Output flux of the equipment: 2504 lm.

Electrical data

Driver power supply: input 220-240 Vac.
Average system power consumption: 10W.
Driver protections: Thermal, short circuit, overvoltage.
Driver connection: whit Internal terminal block.
Insulation class: II.
Functions: On-Off.

Technical Description

Frame finish: White.
Lamp protection: IP65.
Driver protection: IP65.
Mechanical resistance: IK08.
Quality marks: CE, RoHS..

Installation

Recessed installation.
Fixing by steel springs.
These devices are designed for modern control systems.
For different options, see the "Light Control" section.

Dimensions

10W: 85 x H.65mm, foro Ø75mm

Standard:

Quality marks: CE RoHS
Standards: CEI EN 60598-1; CEI EN 60598-2-03.
2014/30/EU, 2014/35/EU; ELR Ecodesign 2019/2015