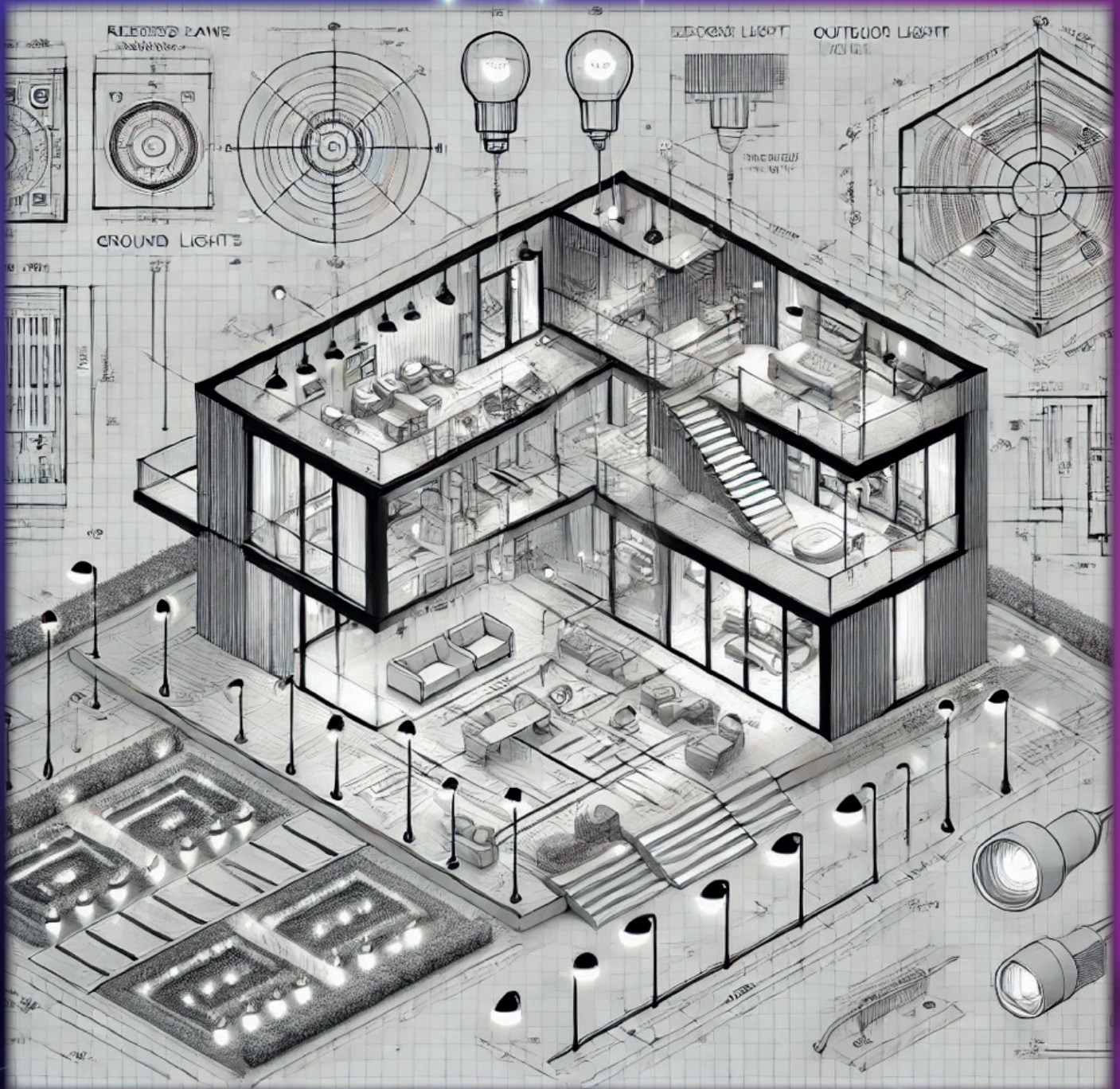


Prim@tek

“Bright Ideas, Custom Build”



PrimOtek Custom Lighting Solutions

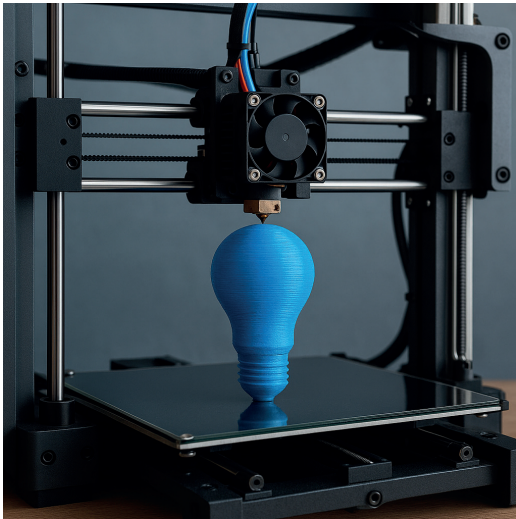
At Primotek, we specialize in creating custom-designed lighting solutions that bring your vision to life, both indoors and outdoors. Whether you're enhancing the ambiance of a home, office or public space our innovative and high-quality lighting products are tailored to fit your unique needs. Transform your space into something extraordinary with Primotek's custom lighting solutions.

100% CUSTOM LIGHTING

We believe that each of your lighting projects is unique. This is why we offer you customized solutions for any environment, from contract to domestic. The starting point is your Idea / need, the arrival is the creation of a unique result!



YOUR CUSTOM-MADE PRODUCT



The concept of "CUSTOM-MADE" comes from the world of Fashion and means designing and then creating a personalized and unique product. We have also adopted this concept in our production line, making it tailored: the production of lighting equipment and the design experience allow us to give life to equipment deriving from any of your ideas or needs, without limits on performance, shape to achieve the final result requested by you. The product will be exclusively reserved for you and no one else.

DIALOGUE AND COMPARISON

The starting point for a custom product or project is always the dialogue with the Client, Architect or Lighting designer. It is precisely from the story of his ideas, from the effect he imagines and from the needs of integration in the spaces that we are able to get an idea of his practical needs, of the style, of the luminous and mechanical characteristics that the product will have to have in the end.



CUSTOM DESIGN

In the design studio, the PrimOtek team transforms your idea into a product / project. In the initial design phase, any options will be proposed with detailed technical specifications complete with images, drawings and lighting files, followed by initial prototypes, so as to arrive quickly and effectively at the finished product. This will be the result of a perfect fusion between technology, craftsmanship and lighting designer.



CUSTOM-MADE CATEGORIES

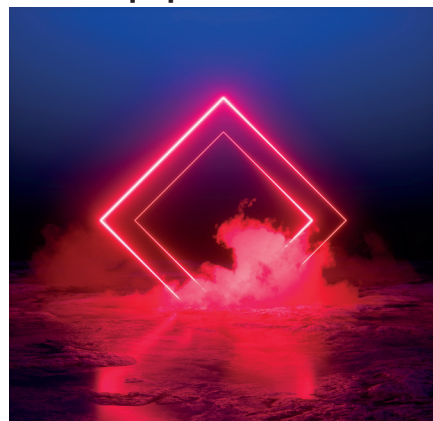
outdoor Lighting



stylised interior lighting



special lighting effects and equipment



EVE-LED

Your linear light design

You design it and we make it



Prim@tek

EVE-LED

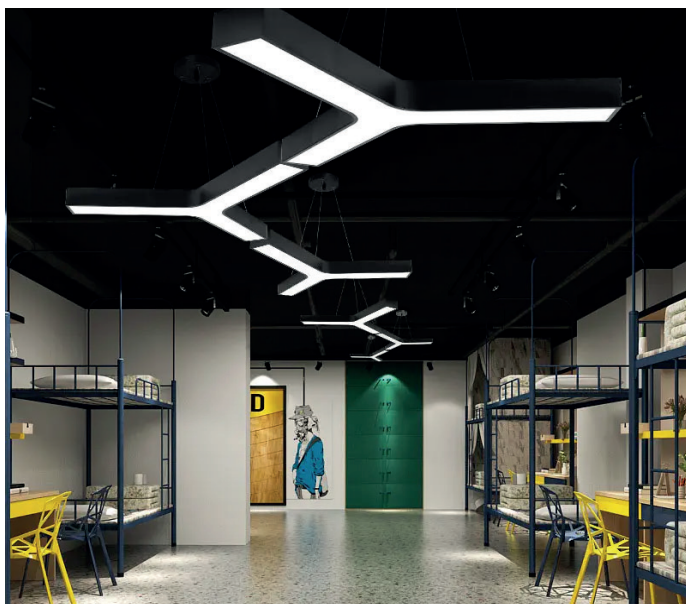
EVE-LED goes beyond the concept of linear light thanks to a compositional freedom that allows a personal interpretation of geometric light.

Suitable for any application environment, it integrates optics, shapes, power and quality of light with intelligent control technologies, style details and exclusive materials.

EVE-LED custom-made

EVE-LED is the linear lighting system customizable according to your geometric design, round, square, intertwined and as you imagine it.

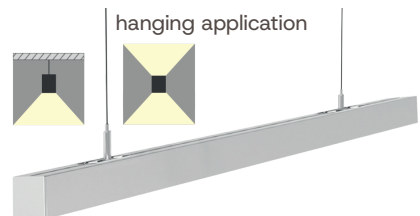
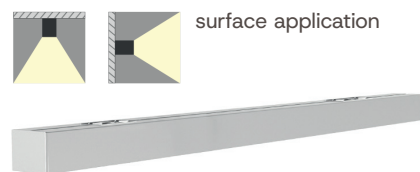
You can choose the type of White light, RGB, RGBW, TW and also the type of control, from On-Off to intelligent control with BUS DALI, DMX etc.



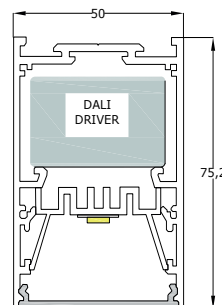
available light



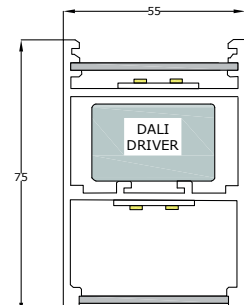
available control system



Single light output



Double light output



EVE-LED modular linear light

Create your shape

Think about your shape and size, we make your personal design.

Choose the light

White 2700K / 3000K / 3500K / 4000K
RGB / RGBW / TW

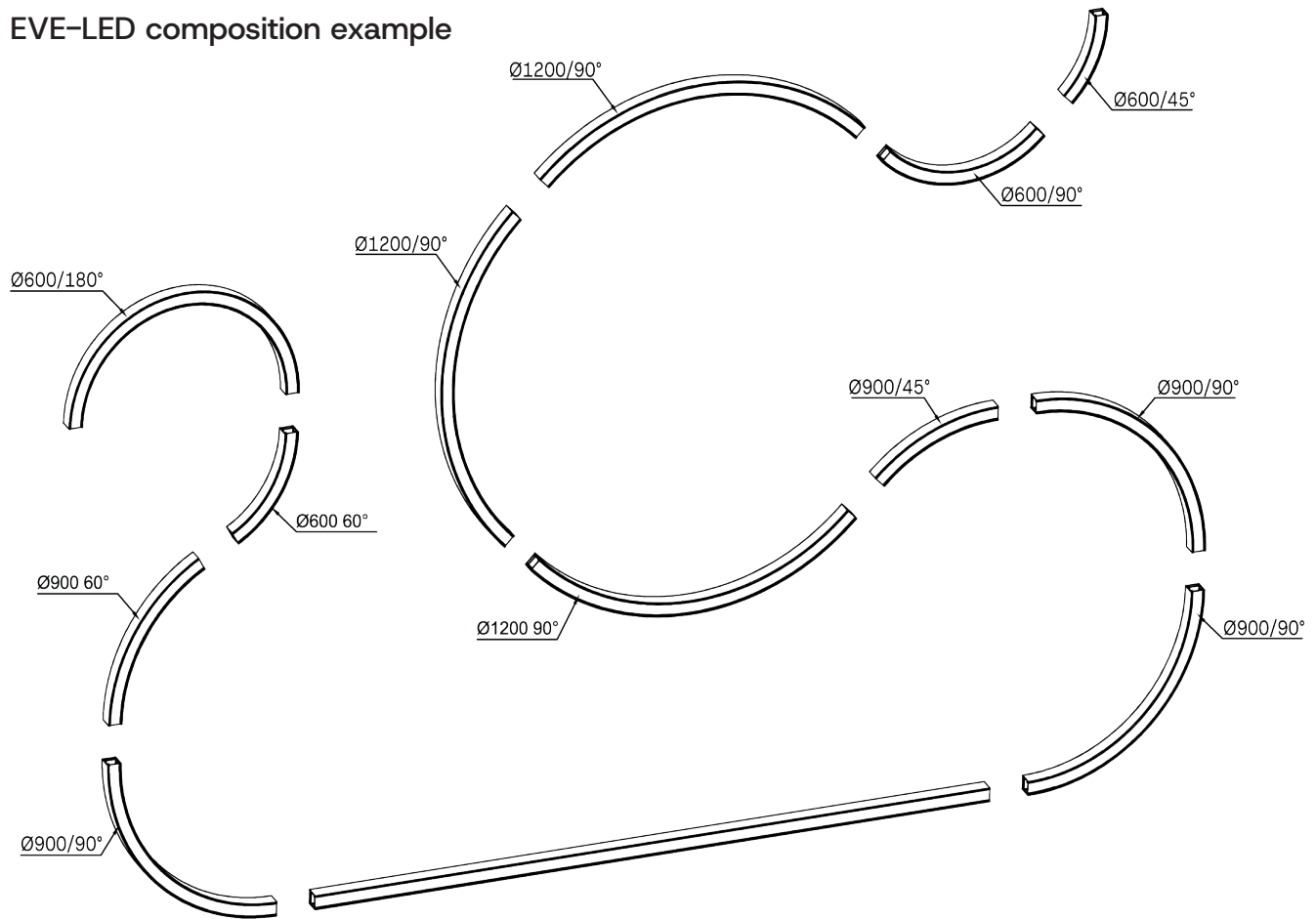
Choose the Power

White: 10W/m Up to 32W/m
RGB / RGBW / TW: 15W/m Up to 20W/m

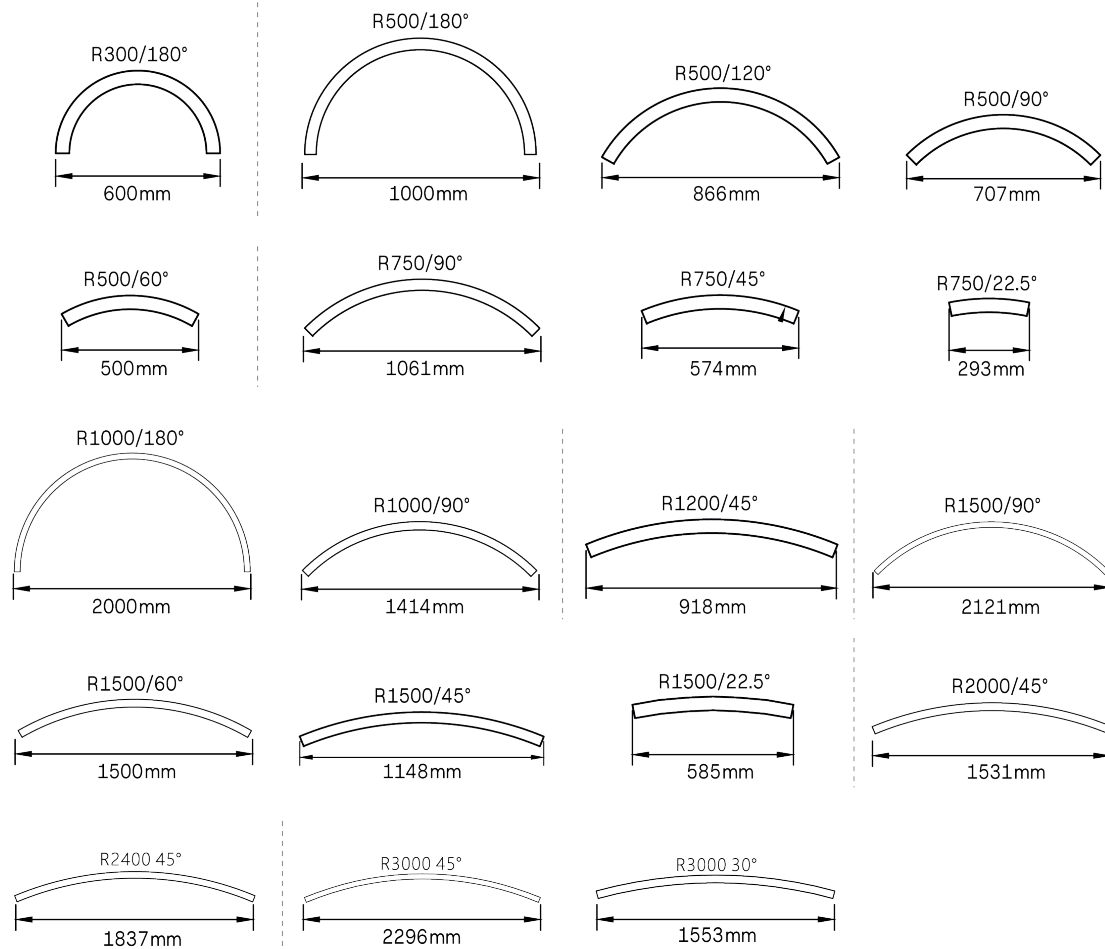
Choose the type of control

On-Off / DALI / DALI-2 / DMX
CASAMBI / ZigBee

EVE-LED composition example



EVE-LED example of realizable curves





CADY-LED Light to city



Prim@tek

CADY-LED

We expand the dimensional range with the new CADY-LED slim wall washer version with body dimensions of only 35×50 mm, even more miniaturized, expanding versatility in both urban and residential environments.

High power with small dimensions and multiple applications with modular models of three dimensions to facilitate the lighting of any geometric shape. The possibility of powering and controlling multiple wall washers between them reduces the components and facilitates maintenance. Wide range of efficient optics, with a wide range of angles for a perfect effect, high luminous flux and homogeneous brightness.

The new optical technology is characterized by very high efficiency and a multiplicity of light distributions, with ellipsoidal, asymmetrical optics, very narrow angle, medium and wide angle, for lighting facades, columns, perimeter walls, towers, bridges, historic and modern buildings. Finally, CADY-LED is available in four color temperatures, starting from 2700K, RGB version, RGBW and TW versions for both static and dynamic scenographies.

CADY-LED control can be on-off or DMX with RDM functions with which it is possible to choose the operating personality, such as the subdivision into 4 pixels for the CADY-LED 100 model and into 2 pixels for the CADY-LED 50 model, therefore it is also possible to assign the DMX starting address remotely and control its status.



Black



Anthracite

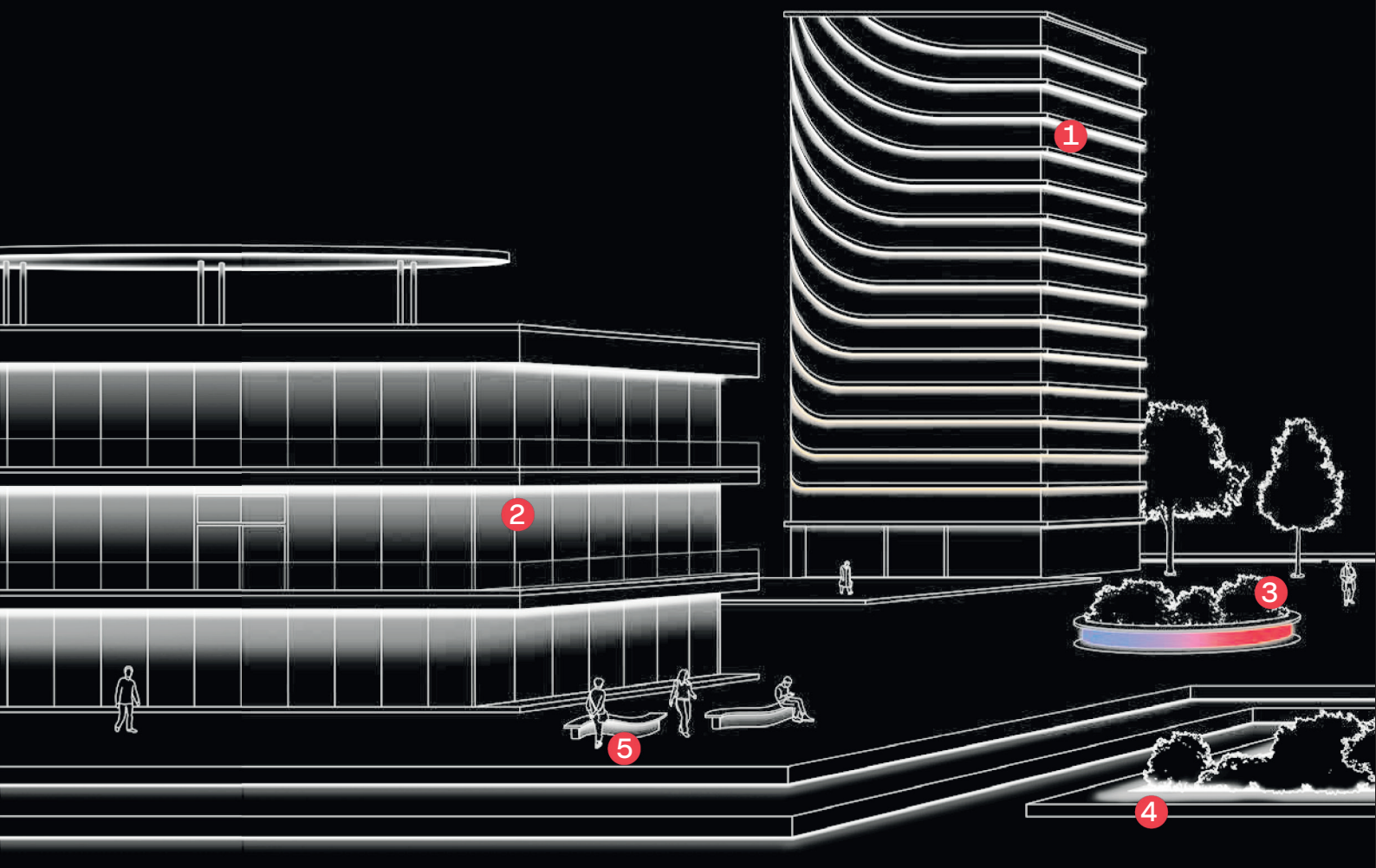


Light Gray



White

Light that enhances architecture:
CADY-LED highlights, shades or colours the scene,
of any architectural form.



Applications and Installations

- 1** Continuous lines of light to follow the curved shape of the elements of the facade, creating dynamic shades of RGBW, TW or white light to give the architecture a nocturnal atmosphere.
Installation: CADY-LED of different sizes based on the curvature of the building's niches.
- 2** Continuous linear light line to enhance the depths of the planes and illuminate with a grazing effect the vertical surfaces in a delicate and fade mode.
Installation: linear with a wall washer effect from top to bottom.
- 3** Curved light line with direct downward emission formed by series of CADY-LED 30 positioned under the seat to create an effect of lightness and playfulness by varying the colors.
Installation: with adjustable brackets in the lower parts of the raised elements.
- 4** Line of light as a border between a horizontal wall and vertical vegetation with upward emission.
Installation: with adjustable brackets on the internal vertical part of the wall.
- 5** Curved light line with direct downward emission positioned under the bench seat to create a particular floating effect, to highlight the urban furniture element.
Installation: with support brackets integrated into the part under the seat

Prim@tek

CADY-LED modular linear light

RGB / RGBW / TW versions

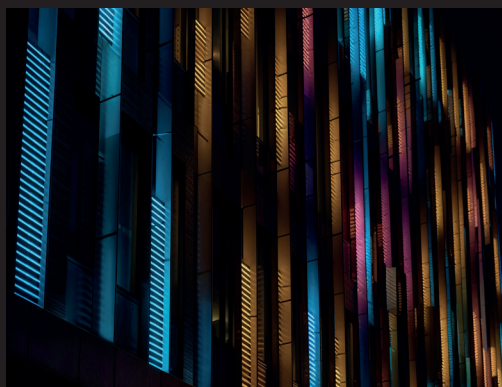
DMX-RDM for setting and control

Four selectable operating personalities for different control needs with effects from color mixing to pixel control color mixing.

Single color versions.

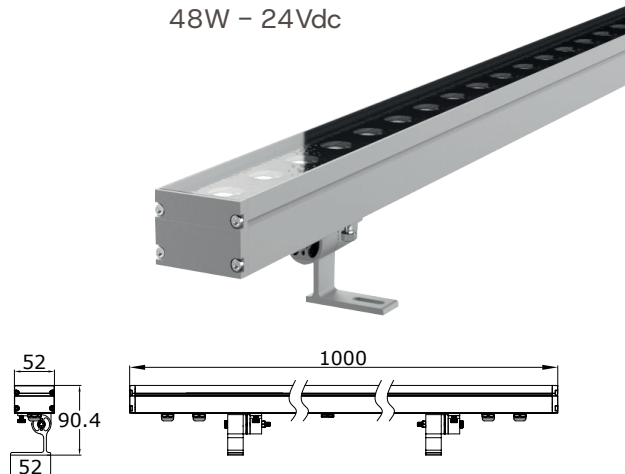
setting and Dimmable with

DMX / DALI / DALI-2 / On-Off

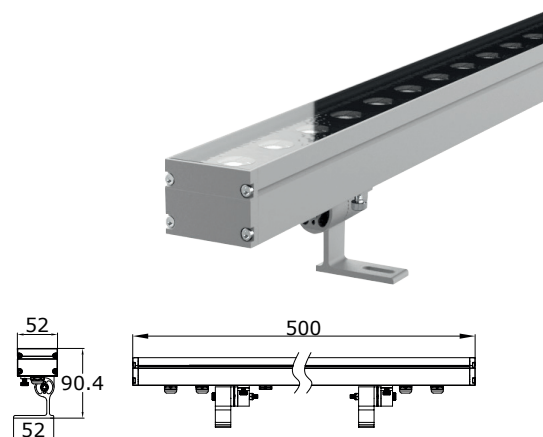


CADY-LED SERIES

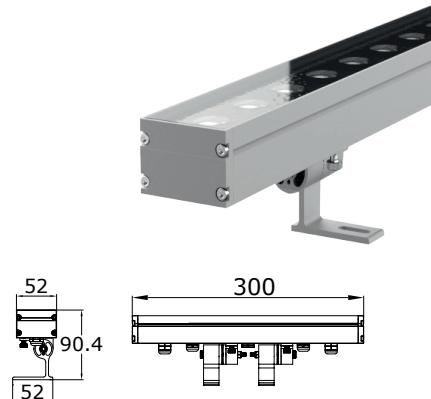
CADY-LED 100
48W - 24Vdc



CADY-LED 50
24W - 24Vdc



CADY-LED 30
16W - 24Vdc



Kraft-LED

Light up by
decorating



PrimOtek



Kraft-LED

Kraft-LED is the series of architectural Spots par excellence.

The union of a strong and resistant mechanical structure combined with customizable electronics such as power, width of the light beam, type of light and control system, make it in all respects a customizable series for any outdoor architectural application.

Kraft-LED projector with bracket – Selectable LEDs from 4 shades of white to RGBW – Integrated power supply – Optics on request. Projector designed for the use of LED sources and selectable fixed optics. Made up of a die-cast aluminum optical compartment, bracket and power supply box with transparent tempered sodium-calcium safety glass. The device is equipped with a double cable gland for pass-through wiring. The optical compartment can be adjusted on the horizontal plane with an angle between -50° and $+90^\circ$. Kraft-LED is equipped with a graduated scale and a mechanical locking device for positioning. The optical system is equipped with Opti Beam reflectors with White or RGBW monochromatic LEDs. The DALI or On-Off electronic power supply is integrated into the product and compatible with remote management systems. Compatible with programming systems via DALI terminals. It is possible to use accessories for both interiors (diffuser glasses, blades and refractors for elliptical light) and exteriors (cylindrical screens, visors and protection grilles). All external screws used are in A2 stainless steel.

Installation: Floor, ceiling or wall installation.

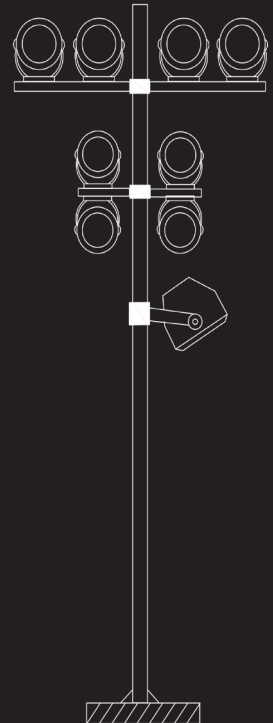


Surface wall installation

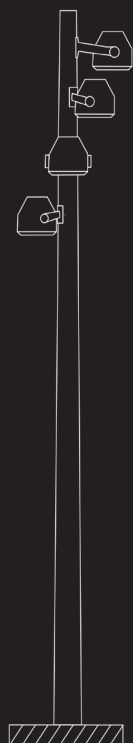
Pole Mounted type 1



Pole Mounted type 2



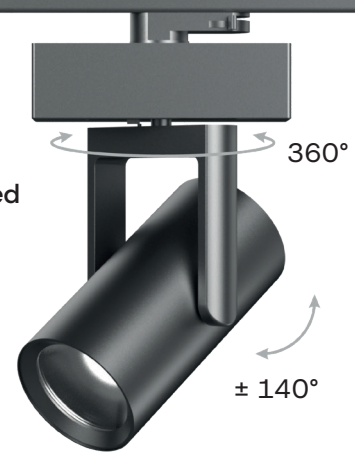
Pole Mounted type 3



Light at your fingertips



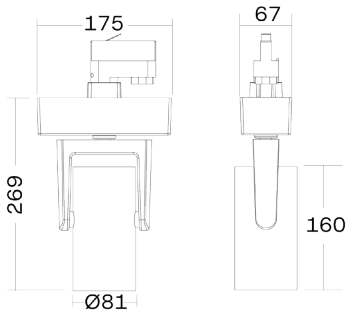
Motorized



Application

The Motorized Track Light series is the ideal solution for museum and retail application. The fixture enable users to focus on a narrow to wide spot at the touch of a button. Application areas: retail, museums, hospitality, offices.

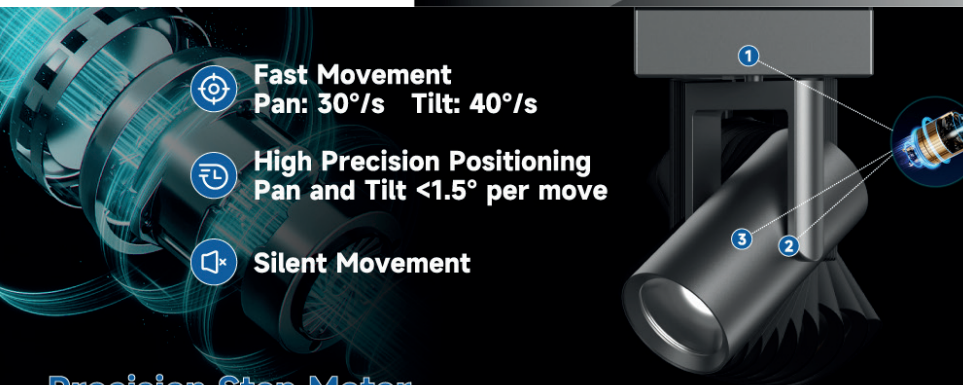
- Highly precise positioning
- Easy and Fast configuration
- PAN/TILT/Zoom/CCT/Dimmer
- Preset scenes with memory
- Silent movement



Zoomable & Flexible

From 18°-60°, It can be changed to suit different events, scenarios, functions or even table size.

- ZOOMABLE**
Beam Angle: 18°-60°
- DIMMER**
0%-100% Self Dimming



- Fast Movement**
Pan: 30°/s Tilt: 40°/s
- High Precision Positioning**
Pan and Tilt <1.5° per move
- Silent Movement**

Precision Step Motor

Different from the traditional gear structure design, 3 DC motors drive the movements of the fixture, It allows to precisely control with fast 40D/S adjustments coupled with low noise and high speed operation.

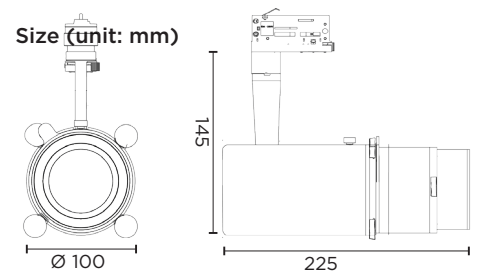




Mini-Profile LED is an innovative, small-sized projector with a shaping of the light beam and possibility of projecting images and writings (with accessory not supplied). The optics consist of a lens for precision focusing.

Mini-Profile LED has a modern but at the same time professional design. The ease of use, the clear projection of the shape with a very bright and uniform beam in a compact, resistant and lightweight body allow the use of Mini-Profile LED in multiple applications. Profile LED is designed to be used inside showrooms, museums, restaurants, places of worship, art galleries and in all those situations where the proportions and bright prominence are an important factor. Available in versions with track attachment or with fixing base.

The finish can be requested black or white. ON-OFF control or DALI dimmable. Equipped with high quality standards of the light source and CRI97 color rendering in all shades of white. Available in versions with 2700K / 3000K / 3500K / 4000K / 5700K color temperature with selected binning.



Prim@tek

PrimOtek s.r.l.s.

via Primo Maggio 19, 25013 Carpenedolo (BS) Italia

tel.: +39 030 23889856

P.IVA: 02669020204

info@primotek.it - www.primotek.it