



# Theatre and Show

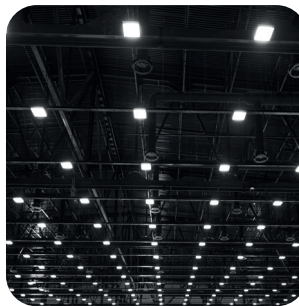
**LED Professional lighting**



# Prim@lux

L I G H T S D I V I S I O N

PrimoLUX, the lighting division of PrimOtek, a dynamic and constantly growing company, with thirty years of experience, able to offer over the time a complete range of lighting engineering and light control solutions. Continuous commitment to research and development and accurate control of the whole production process. From the design of the product to its realization up to its use in the most sophisticated creations. The mix of specialist skills, innovation and attention to detail are the goals of the company, this brings into elegant and functional design products, able to satisfy the most demanding technical and aesthetic needs of any project. All the products of the PrimoLux line by PrimOtek are made using the most modern technologies and with the highest quality components that guarantee reliability and efficiency over time.





**FAL300LED-RGBALC      4**



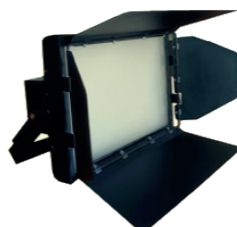
**FAL-FRS 300 RGBW      5**



**FAL-FRS 600 TW      6**



**FAL-FRS 450 RGBW      7**



**F200 LED-TW      8**

# FAL300LED-RGBALC

**FRESNEL LED 300W / RGBALC / DMX-RDM / IP23**

**ITEM: FRS300C-RGBALC**

The FAL 300 LED Fresnel is the result of the search for the best combination of professionalism, quality and competitive price; optimal light output and ease of use, combining durability and ease of maintenance. FAL300 LED Fresnel is a product designed for professionals for the best performance. Durability: Made with aluminum body and steel parts. Light source: Interchangeable professional LED module RGBALC (Red, Green, Blue, Amber, Lime, Cyan). Adjustable color temperature 2700K-10000K CCT, CRI97 - TLCI > 90. Optical system: Glass lens set + 175 mm Fresnel lens. Motorized Beam angle ZOOM: 14° - 55°

Dimming: 16 bits 0-100%, 4 dimmer curves option, dimmer speed option. Signal input & output: XLR3 + XLR5.

Channels options: 10-CH, 11-CH, 8H-CH, 9H-CH, 18-CH selectable

Control via: DMX with RDM functions, Digital display for manual operation. Cooling system options: Silent fan, intelligent automatic temperature regulation system, 3 fan modes. Long lasting performance: Rugged construction, high capacity electrical system components with high temperature insulation. Safety: all appliances are CE marked according to the EN 60598-2-17 standard for professional lighting fixtures for public places and theaters.

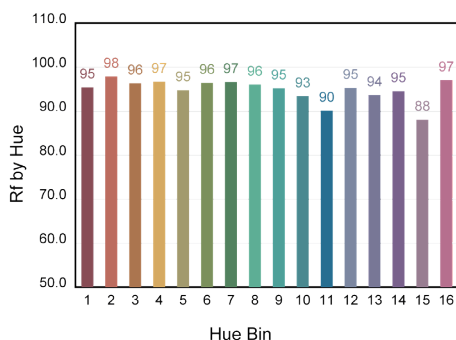
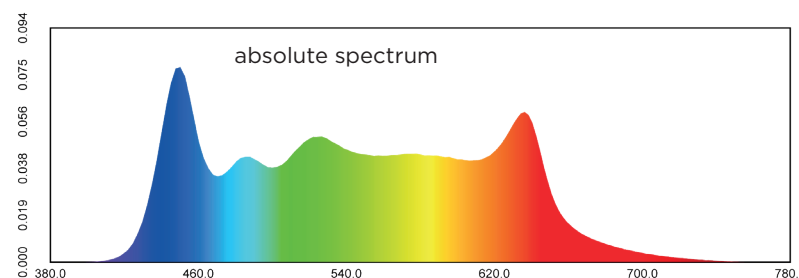
## TECHNICAL SPECIFICATIONS:

Reversible yoke mounted on extruded sliding rails for better balancing of the accessories and for use in any position. Aluminum and steel housing for thermal dissipation and high shock resistance, integrated safety mesh and filter-frame locking system. Black coating. Zoom adjustment 14° - 55° by DMX integrated step motor positioned. Work positioning respect to the horizontal axis 90° / -90°, by back handle and tightening by means of an ergonomic lateral knob. XLR 5P + XLR 3P NEUTRIK for signal connections IN-OUT. Powercon in-out for power connections.

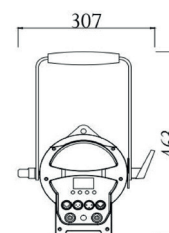
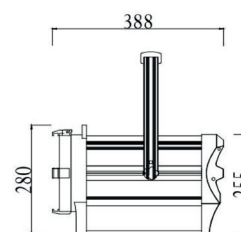
Digital Display with functions control. Interchangeable professional LED Arrays RGBALC. CRI > 97 and TLCI > 90 @ 3000K.

Selectable FAN MODE

Photometric data ITEM: FAL300LED-RGBALC			
Distance	2.5 mt.	5 mt.	7.5 mt.
14°@Full on	10074 lx	2519 lx	1119 lx
55°@Full on	6409 lx	1602 lx	712 lx
14°@5600K	6899 lx	1725 lx	767 lx
55°@5600K	4449 lx	1112 lx	494 lx
14°@3200K	5606 lx	1401 lx	623 lx
55°@3200K	3544 lx	886 lx	394 lx



Hue Bin	Hue Angle	CRI
1	0.0° - 22.5°	95
2	22.5° - 45.0°	98
3	45.0° - 67.5°	96
4	67.5° - 90.0°	97
5	90.0° - 112.5°	95
6	112.5° - 135.0°	96
7	135.0° - 157.5°	97
8	157.5° - 180.0°	96
9	180.0° - 202.5°	95
10	202.5° - 225.0°	93
11	225.0° - 247.5°	90
12	247.5° - 270.0°	95
13	270.0° - 292.5°	94
14	292.5° - 315.0°	95
15	315.0° - 337.5°	88
16	337.5° - 360.0°	97



## OPTICS SYSTEM:

- Glass lens set + 175 mm Fresnel lens.
- Motorized ZOOM: 14° - 55°

## ELECTRICAL DATA:

- Standard 100-240V, 50/60Hz power supply (auto set).
- DMX: XLR 3-pole and XLR 5-pole In / Out panel connectors
- Power supply: powerCON In / Out panel connectors
- Power consumption: 300W full on
- Stand-by Power consumption: 6.5W
- Ta: -10...+40°C
- Tb: Max 60°
- Overvoltage and overtemperature circuits protection

## PHYSICAL

- IP23
- N. Weight: 10Kg
- Finishing: Black

## OPTIONAL ACCESSORIES:

- Four-leaf barndoor (cod.PL300C)
- safety cable
- C-clamp

# FAL-Profile 300LED-RGBALC

**Profile LED 300W / RGBALC / DMX-RDM / IP23**

available with 14°,19°,26°,36°,50°, Zoom 15°- 36°, Zoom 25°- 50° optical system

The FAL-Profile LED series is the result of the search for the best combination of professionalism, quality and competitive price; optimal light output and ease of use, combining durability and ease of maintenance. FAL-Profile 300 LED is a series designed for professionals for the best performance, the available optics are:

14°,19°,26°,36°,50°, Zoom 15°- 36°, Zoom 25°- 50°.

Light source: RGBALC interchangeable professional LED module (red, green, blue, amber, lime, cyan). Adjustable color temperature 2700K-10000K CCT, CRI97 - TLCI>90. Dimming: 16 bit 0-100%, 4 dimmer curves option, dimmer speed option.

Signal input and output: XLR3 + XLR5.

Channel options: 10-CH,11-CH,8H-CH,9H-CH,18-CH selectable

Control via: DMX with RDM functions, Digital display for manual operation.

Cooling system options: silent fan, intelligent automatic temperature control system, 3 fan modes. Long-lasting performance: robust construction, high-capacity electrical system components with high temperature insulation.

Safety: all appliances are CE marked according to the EN 60598-2-17 standard for professional lighting fixtures for public venues and theatres.

Technical specifications:

Reversible yoke mounted on extruded slide rails for better balance of the accessories and for use in any position.

Aluminum and steel body for heat dissipation and high impact resistance, integrated safety net and filter frame locking system. Black lining.

Work positioning with respect to the horizontal axis 90° / -90°, by means of a rear handle and tightening by means of an ergonomic side knob.

XLR 5P + XLR 3P NEUTRIK for IN-OUT signal connections.

Powercon in-out for power connections.

Digital display with function control.

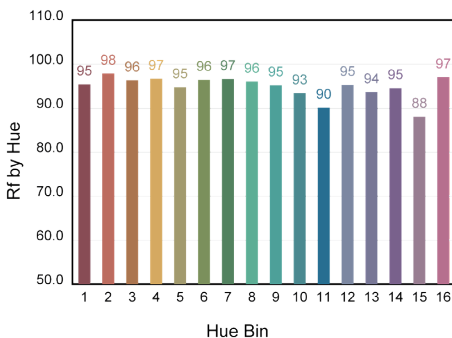
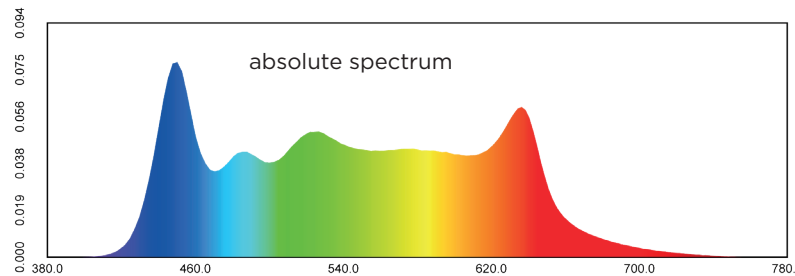
RGBALC interchangeable professional LED arrays.

CRI>97 and TLCI>90 at 3000K

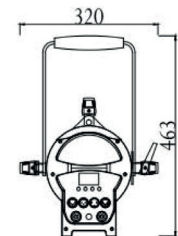
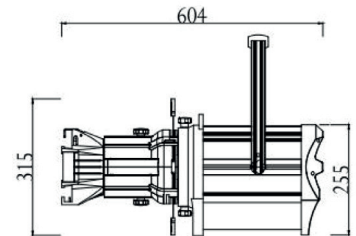
FAN MODE selectable

**Photometric data**  
FAL-PROFILE SERIES

Distance	5 mt.	8 mt.	10 mt.
19°	3942 lx	1540 lx	986 lx
26°	2094 lx	818 lx	524 lx
36°	1239 lx	484 lx	310 lx
50°	710 lx	277 lx	177 lx



Hue Bin	Hue Angle	CRI
1	0.0° - 22.5°	95
2	22.5° - 45.0°	98
3	45.0° - 67.5°	96
4	67.5° - 90.0°	97
5	90.0° - 112.5°	95
6	112.5° - 135.0°	96
7	135.0° - 157.5°	97
8	157.5° - 180.0°	96
9	180.0° - 202.5°	95
10	202.5° - 225.0°	93
11	225.0° - 247.5°	90
12	247.5° - 270.0°	95
13	270.0° - 292.5°	94
14	292.5° - 315.0°	95
15	315.0° - 337.5°	88
16	337.5° - 360.0°	97



## OPTICS SYSTEM:

- Glass lens set + objective

## ELECTRICAL DATA:

- Standard 100-240V, 50/60Hz power supply (auto set).
- DMX: XLR 3-pole and XLR 5-pole In / Out panel connectors
- Power supply: powerCON In / Out panel connectors
- Power consumption: 300W full on
- Stand-by Power consumption: 6.5W
- Ta: -10...+40°C
- Tb: Max 60°
- Overvoltage and overtemperature circuits protection

## PHYSICAL

- IP23
- N. Weight: 10,5Kg
- Finishing: Black

## OPTIONAL ACCESSORIES:

- safety cable
- C-clamp



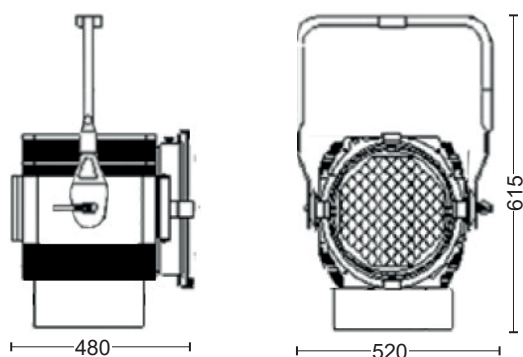
# FAL600LED-TW

## FRESNEL LED 600W / Tunable White / DMX-RDM

### ITEM: FRS600L-TW

tunable white function from 3000K (CRI96) to 5700K (CRI94) TLCI>90.

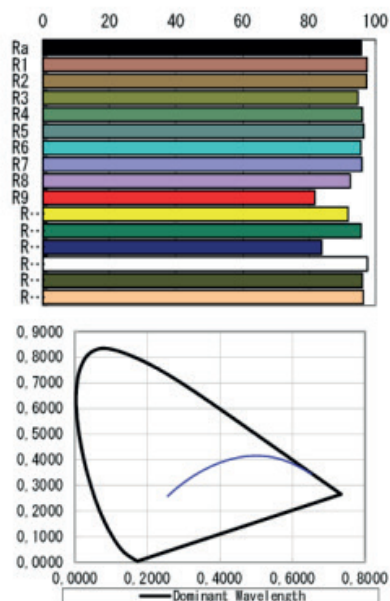
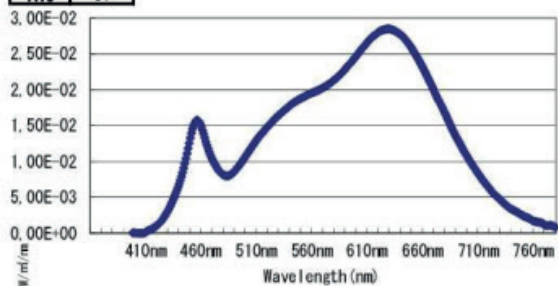
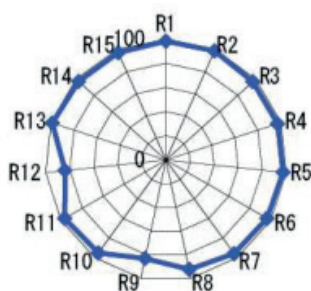
FAL 600LED TW is a Spot/Flood projector with a 600W tunable white LED source.  
Fresnel lens.  
16bit Dimmer and control via DMX signal with RDM functions.  
Manual zoom from 11° to 60°.  
Standard DMX512-RDM control signal.  
DALI (optional), DMX Wireless (optional).  
Digital display for function setting and manual operation.  
185x185 mm filter frame.  
Optional 4-leaves barndoor (cod. PL6000)



### Photometric data 3000K CRI96

	distance	5m	8 m	10 m	12 m	16 m	24 m
beam angle 11.5°	LUX	13855	5412	3464	2405.34	1353	601
	Ø (m)	1 m	1.6 m	2 m	2.4 m	3.2 m	4.8 m
beam angle 60°	LUX	2224	868	556	386	217	97
	Ø (m)	5.8 m	9.2 m	11.5 m	13.9 m	18.5 m	27.7 m

Ra	97
R1	98
R2	99
R3	97
R4	97
R5	97
R6	97
R7	96
R8	93
R9	83
R10	95
R11	97
R12	84
R13	99
R14	97
R15	97



OPTIONAL  
4-leaves barndoor  
cod. PL6000

# FAL450LED-RGBW

## FRESNEL LED 450W / RGBW / DMX-RDM

### ITEM: FRS450L-RGBW

(Color mixing: Red, Green, Blue, White)  
Full color (CRI98) TLCI>90..

FAL 450LED is a Spot/Flood projector with a 450W RGBW LED source. Fresnel lens. 16bit Dimmer, color mixing and control By DMX signal and RDM functions.

Manual zoom from 11° to 60°.

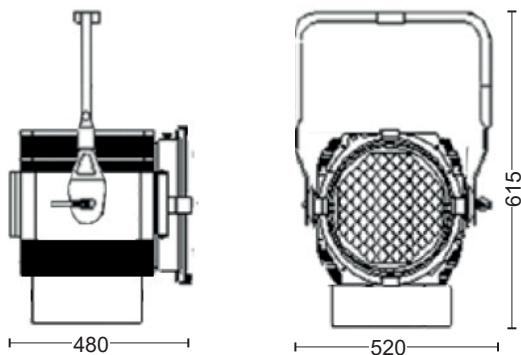
Standard DMX512-RDM control signal.

DALI (optional), DMX Wireless (optional).

Digital display for function setting and manual operation.

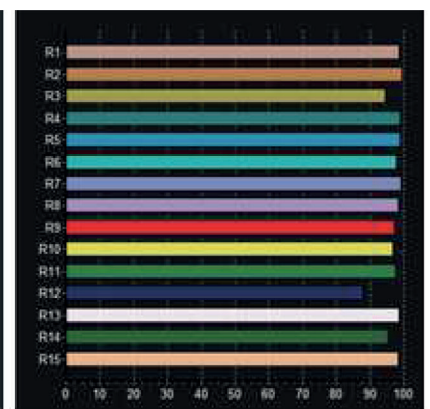
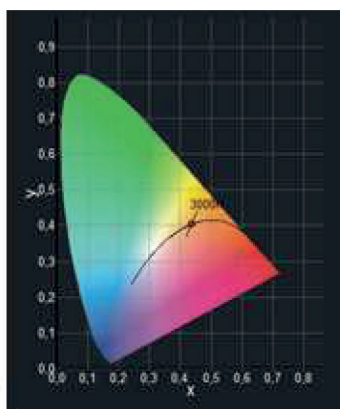
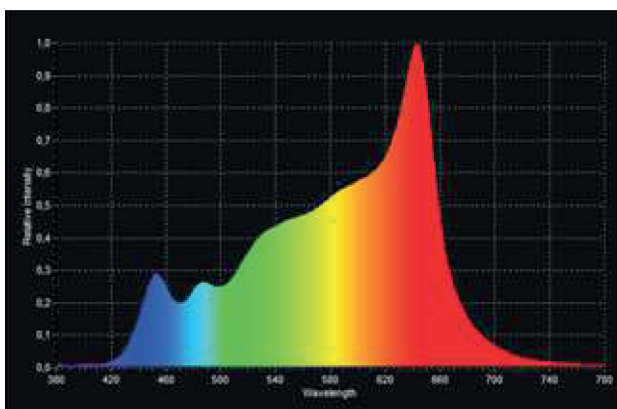
Filter frame included.

Optional 4-leaves barndoor (cod. PL6000)



### Photometric data Full ON

	distance	5m	8 m	10 m	12 m	16 m	24 m
beam angle 11.5°	LUX	12885	5033	3221	2237	1258	559
	Ø (m)	1 m	1.6 m	2 m	2.4 m	3.2 m	4.8 m
beam angle 60°	LUX	2068	807	517	359	202	90
	Ø (m)	5.8 m	9.2 m	11.5 m	13.9 m	18.5 m	27.7 m



OPTIONAL  
4-leaves barndoor  
cod. PL6000

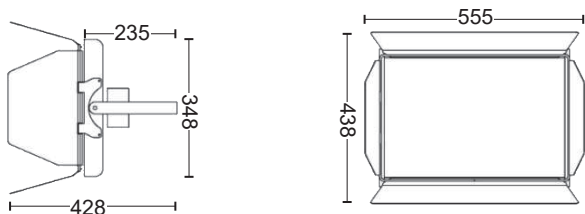
# F200 LED-TW

Soft light Panel LED 200W / Tunable White / DMX

## ITEM: FLS200L-TW

tunable white function from 3000K (CRI96) to 5700K (CRI94) TLCI>90

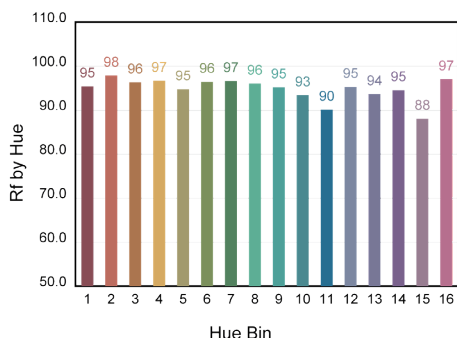
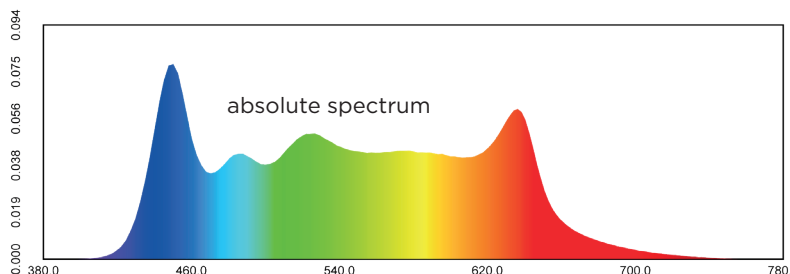
F 200L LED-TW is a Flood soft light projector with a 200W tunable white LED source. Microprismatic and anti-glare diffuser. 16bit Dimmer and control via DMX signal with RDM functions. Manual Knobs for Dimmer and Color Temperature adjustment Up to 120° beam angle. Standard DMX512-RDM control signal. DALI (optional), DMX Wireless (optional). Digital display for function setting and manual operation. Included 4-leaves barndoor.



Photometric data  
Indicative measurements

Distance	1 m	2 m	3 m	4 m
LUX 5700K:	17042 lx	4263 lx	1895 lx	1066 lx
LUX 3200K:	13838 lx	3459 lx	1538 lx	865 lx
Ø:	3.46 m	6.93 m	10.39 m	13.88 m

Power Consumption: 200W  
Voltage: 100 - 240V AC  
Frequency: 50/60Hz  
Light Source: LED  
Lens: Matrix compound eye optical system  
Color temperature: 3200K <-> 5600K adjustable  
CRI: 97 / TLCI>90  
Beam Angle: 120°  
Dimming Range: 16bit smooth dimming 0-100%  
DMX Channel: 2CH/3CH/5CH Optional  
Control system: DMX512/ Potentiometer  
Manual Rotary Knob for dim and TW adjust  
RDM Functions  
Display Screen: 4-Button LCD Screen  
IP Rating: IP23  
Ambient Temp.: -15°...40°C  
Product size: 555x437x427mm  
Weight: 6.2kgs



Hue Bin	Hue Angle	CRI
1	0.0° - 22.5°	95
2	22.5° - 45.0°	98
3	45.0° - 67.5°	96
4	67.5° - 90.0°	97
5	90.0° - 112.5°	95
6	112.5° - 135.0°	96
7	135.0° - 157.5°	97
8	157.5° - 180.0°	96
9	180.0° - 202.5°	95
10	202.5° - 225.0°	93
11	225.0° - 247.5°	90
12	247.5° - 270.0°	95
13	270.0° - 292.5°	94
14	292.5° - 315.0°	95
15	315.0° - 337.5°	88
16	337.5° - 360.0°	97





PrimOtek s.r.l.s.  
via Primo Maggio, 19  
25013 Carpenedolo (BS) Italia  
tel: +39 0302389856  
[www.primotek.it](http://www.primotek.it) - [info@primotek.it](mailto:info@primotek.it)